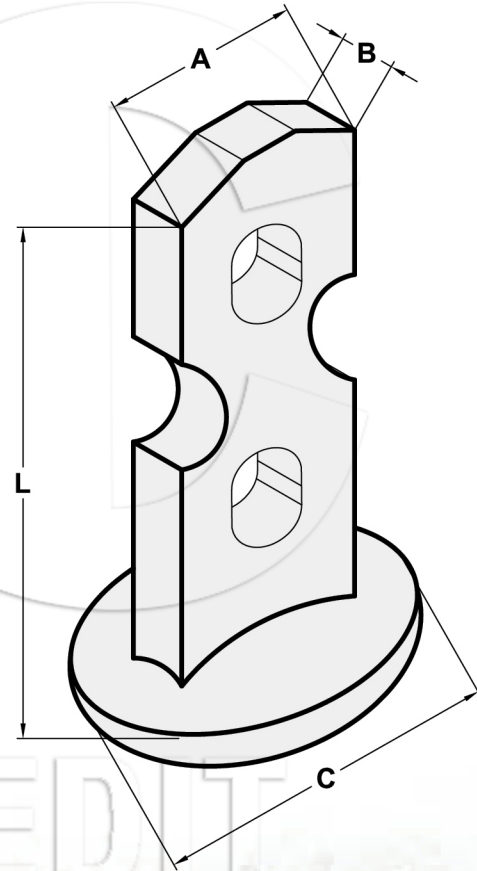


# DROP FORGED FOOT ANCHOR



Anchor Tonnage (t)	S.W.L Tension (lbs)	Clutch ID	Dimensions (in)			
			L	A	B	C
2.5	3900	2-2.5T	3-1/2	1-5/16	3/8	1-1/2
2.5	4400	2-2.5T	4	1-5/16	3/8	1-1/2
2.5	4400	2-2.5T	4-1/2	1-5/16	3/8	1-1/2
2.5	4500	2-2.5T	5-1/2	1-5/16	3/8	1-1/2
2.5	5500	2-2.5T	6-3/4	1-5/16	3/8	1-1/2
5	4400	4-5T	3-1/2	1-13/16	5/8	2-1/4
5	6200	4-5T	4-1/2	1-13/16	5/8	2-1/4
5	6200	4-5T	4-3/4	1-13/16	5/8	2-1/4
5	8800	4-5T	5-1/2	1-13/16	5/8	2-1/4
5	11000	4-5T	9-1/2	1-13/16	5/8	2-1/4
10	6200	8-10T	4-3/4	2-5/8	3/4	2-7/8
10	8500	8-10T	5-1/2	2-5/8	3/4	2-7/8
10	12500	8-10T	7	2-5/8	3/4	2-7/8
10	22000	8-10T	10	2-5/8	3/4	2-7/8

**⚠️ WARNING** Never exceed Working Load Limit