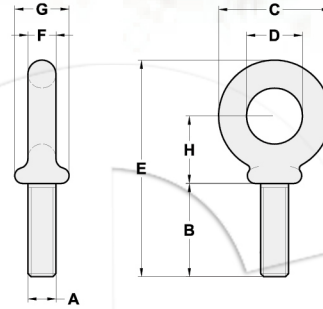


US TYPE FORGED MACHINERY EYE BOLTS S279



Size (in.)	Working Load Limit (lbs.)	Weight Per 100 (lbs.)	Dimensions (in.)							
			A	B	C	D	E	F	G	H
1/4 x 1	650	5	1/4-20	1.02	1.13	0.75	2.29	0.19	0.53	0.77
5/16 x 1-1/8	1200	9	5/16-18	1.15	1.38	0.88	2.74	0.25	0.59	0.95
3/8 x 1-1/4	1550	15	3/8-16	1.27	1.62	1	3.07	0.31	0.69	1.05
1/2 x 1-1/2	2600	28	1/2-13	1.53	1.95	1.19	3.7	0.38	0.91	1.27
5/8 x 1-3/4	5200	55	5/8-11	1.79	2.38	1.38	4.45	0.5	1.13	1.53
3/4 x 2	7200	96	3/4-10	2.05	2.76	1.5	5.07	0.63	1.38	1.71
7/8 x 2-1/4	10600	154	7/8-10	2.31	3.25	1.75	5.87	0.75	1.56	2
1 x 2-1/2	13300	238	1-8	2.57	3.76	2	6.66	0.88	1.81	2.3
1-1/8 x 2-3/4	15000	320	1-1/8-7	2.75	4.19	2.25	7.2	0.97	2.06	2.35
1-1/4 x 3	21000	399	1-1/4-7	3.09	4.5	2.5	7.95	1	2.28	2.73
1-1/2 x 3-1/2	24000	720	1-1/2-6	3.6	5.5	3	9.49	1.25	2.75	3.28
1-3/4 x 3-3/4	34000	1040	1-3/4-5	3.75	6.26	3.5	10.48	1.38	3	3.6
2 x 4	42000	1880	2-4-1/2	4	7.62	4	12.31	1.81	3.38	4.5
2-1/2 x 5	65000	3250	2-1/2-4	5	8.76	4.5	14.88	2.12	4.25	5.5

⚠ WARNING Never exceed Working Load Limit