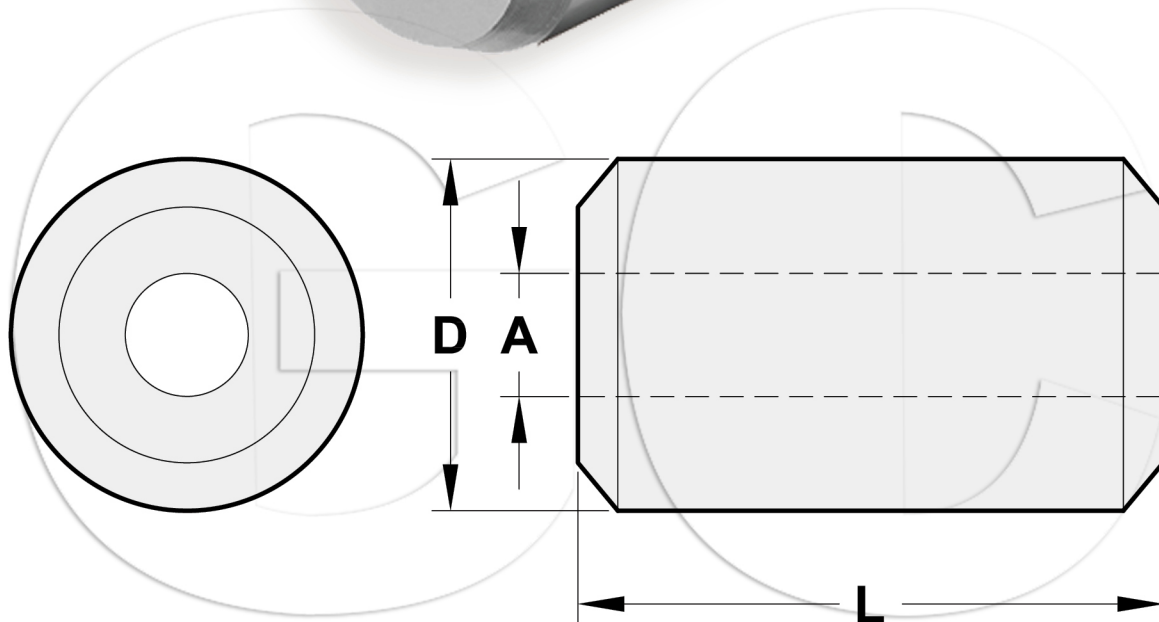
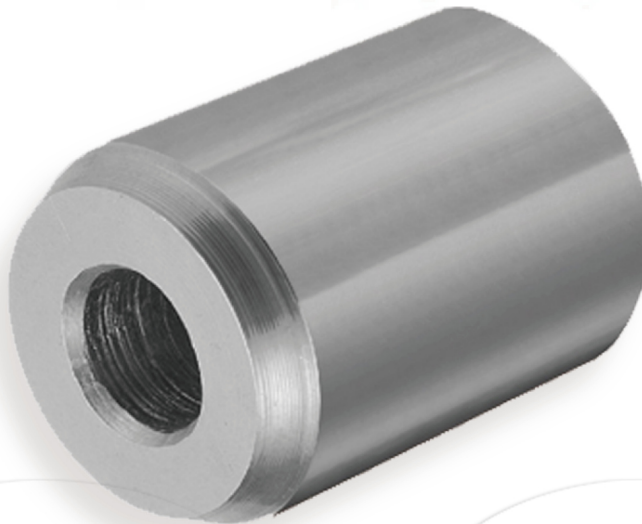


# US TYPE STEEL STOP BUTTONS



- Specially processed low carbon steel
- Note: Steel Stop Buttons Sleeves are recommended for use with 6x19 or 6x37, IPS ORxIP(EIP), RRL, FC or IWRC wire rope

Size (in)	Weight Per 100 (kg)	Dimensions (mm)			Max after Swage DIA. (mm)
		A	D	L	
1/8	9.1	3.56	10.7	12.7	10.2
3/16	18.1	5.08	14.2	17.8	13.2
1/4	36.3	7.87	17.3	26.9	14.7
5/16	72.6	9.14	22.4	28.7	19.6
3/8	68	10.7	22.4	37.6	19.6
7/16	136	12.2	28.7	41.4	26.2
1/2	227	14.0	33.3	48.0	29.5
9/16	318	15.5	36.6	51.3	32.8
5/8	454	17.0	39.6	61.5	36.1
3/4	590	20.3	42.7	69.6	39.6
7/8	1000	23.9	50.8	83.1	45.7
1	1410	26.9	57.2	93.2	52.1
1-1/8	2040	30.2	65.0	103	58.4
1-1/4	2950	33.8	71.4	116	65.0