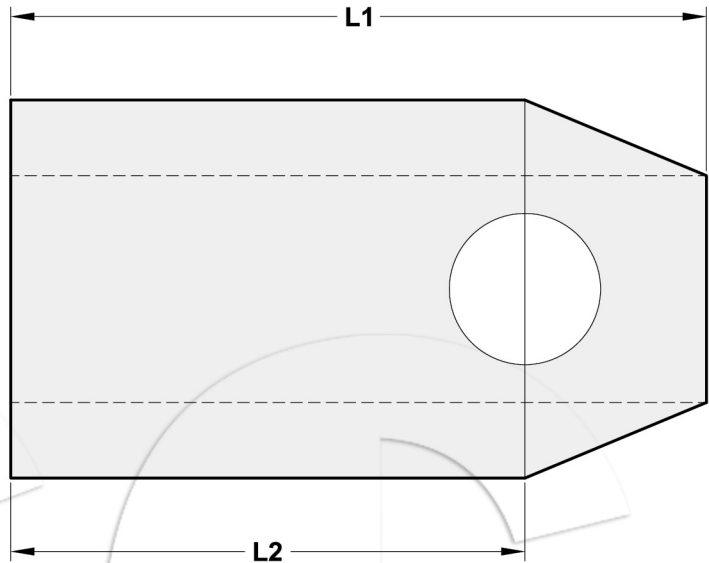
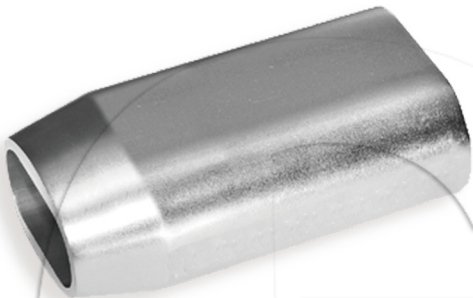
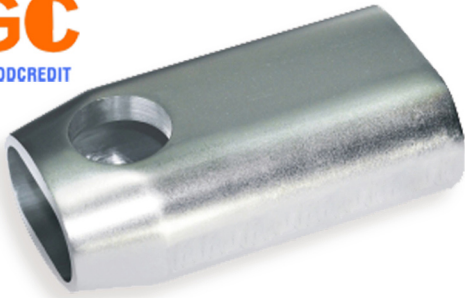


EN13411-3 (DIN3093) FORM C ALUMINIUM FERRULES



- The inspection hole guarantees control of the correct inserted length of wire rope before and after swaging.
- These types of sleeves have to be swaged with the conical type C swaging dies.

Ferrule Code	Dimensions (mm)	
	L1	L2
8	43	34
9	48	38.5
10	53	42
11	59	46.7
12	65	50.2
13	70	54.7
14	75	58.2
16	85	66.5
18	96	75
20	106	83
22	116	91
24	126	99.5
26	136	107.2
28	147	115.5
30	158	125
32	170	135
36	190	150
38	200	158
44	235	186
52	276	218