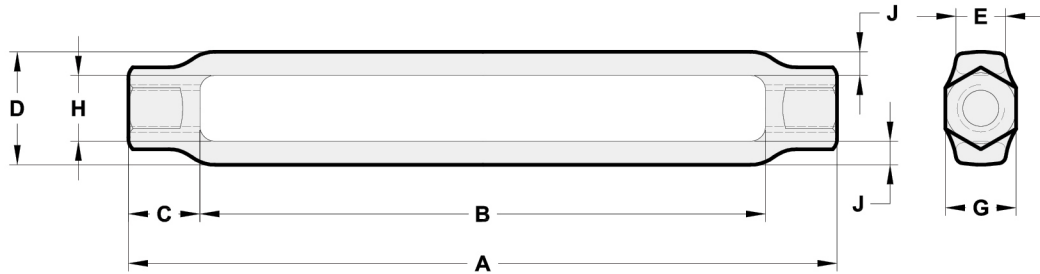
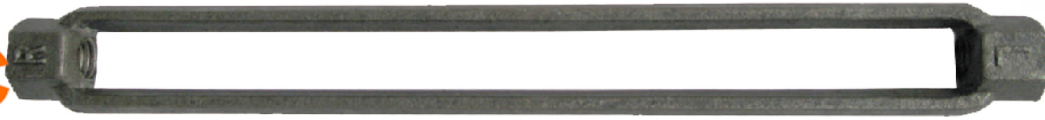


US TYPE FORGED TURNBUCKLE BODY



- Meet Performance requirements of US Fed. Spec. FF-T-791b, Type 1, Form 1, Class 5 and ASTM F-1145
- Material: Carbon 1045 Steel
- Ultimate Load at 5 Times the Working Load Limit
- Finish: Self Color
- Packing available with Carton Box or Gunny Bag

Thread Dia. & Take Up (in)	Working Load Limit (lbs)	Weight Each (lbs)	Dimensions (in)							
			A	B	C	D	E	G	H	J
1/4 x 4	500	0.15	4.87	4.07	0.40	0.72	0.34	0.50	0.38	0.17
5/16 x 4-1/2	800	0.22	5.59	4.58	0.50	0.82	0.38	0.56	0.44	0.19
3/8 x 6	1200	0.29	7.29	6.10	0.60	0.88	0.68	0.63	0.50	0.19
1/2 x 6	2200	0.70	7.70	6.03	0.84	1.19	0.68	0.81	0.63	0.28
1/2 x 9	2200	1.03	11.03	9.36	0.84	1.19	0.68	0.81	0.63	0.28
1/2 x 12	2200	1.27	14.03	12.36	0.84	1.19	0.83	0.81	0.63	0.28
5/8 x 6	3500	1.11	8.02	6.03	1.00	1.43	0.83	1.00	0.75	0.34
5/8 x 9	3500	1.59	11.38	9.39	1.00	1.43	0.83	1.00	0.75	0.34
5/8 x 12	3500	1.96	14.38	12.39	1.00	1.43	0.83	1.00	0.75	0.34
3/4 x 6	5200	1.50	8.26	6.13	1.07	1.74	0.94	1.13	0.94	0.40
3/4 x 9	3500	2.17	11.72	9.59	1.07	1.74	0.94	1.13	0.94	0.40
3/4 x 12	3500	2.66	14.72	12.59	1.07	1.74	0.94	1.13	0.94	0.40
3/4 x 18	3500	3.63	20.66	18.53	1.07	1.74	0.94	1.13	0.94	0.40
7/8 x 12	7200	3.61	14.62	12.16	1.23	2.00	1.13	1.31	1.06	0.47
7/8 x 18	7200	5.27	21.09	18.63	1.23	2.00	1.13	1.31	1.06	0.47
1 x 6	10000	3.32	9.00	6.18	1.41	2.45	1.25	1.50	1.25	0.60
1 x 12	10000	5.34	15.00	12.18	1.41	2.45	1.25	1.50	1.25	0.60
1 x 18	10000	7.35	21.00	18.18	1.41	2.45	1.25	1.50	1.25	0.60
1 x 24	10000	9.85	27.66	24.84	1.41	2.45	1.25	1.50	1.25	0.60
1-1/4 x 12	15200	5.72	15.40	12.06	1.67	2.62	1.25	1.88	1.50	0.56
1-1/4 x 18	15200	7.58	21.40	18.06	1.67	2.62	1.25	1.88	1.50	0.56
1-1/4 x 24	15200	9.45	27.96	24.62	1.67	2.62	1.25	1.88	1.50	0.56
1-1/2 x 12	21400	8.01	15.82	12.32	1.75	2.99	1.50	2.25	1.75	0.62
1-1/2 x 18	21400	10.4	21.82	18.32	1.75	2.99	1.50	2.25	1.75	0.62
1-1/2 x 24	21400	12.9	28.54	24.94	1.75	2.99	1.50	2.25	1.75	0.62
1-3/4 x 18	28000	15.7	22.44	18.37	2.04	3.62	1.75	2.62	2.12	0.75
1-3/4 x 24	28000	19.2	28.44	24.37	2.04	3.62	1.75	2.62	2.12	0.75
2 x 24	37000	25.8	29.13	24.48	2.33	4.14	2.00	3.00	2.38	0.88
2-1/2 x 24	60000	55.9	31.66	24.60	3.53	5.12	2.75	3.88	3.12	1.25
2-3/4 x 24	75000	54.0	31.66	24.65	3.51	5.12	2.75	3.88	4.48	1.25