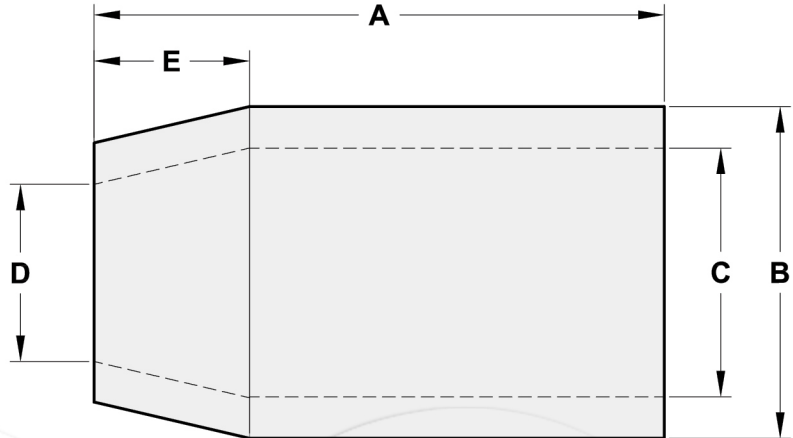


FLEMISH EYE STEEL SWAGING SLEEVES (S-505)



• Our modern in-house forging, heat treatment, sand blasting, auto-marding facilities assures the consistent quality of Flemish eye steel sleeves form 1/4" to 6" (galvanized and self-colored).

Size (in)	Weight Per 100 (kg)	Dimensions (mm)					Max After Swage Dimensions (mm)
		A	B	D	E	C	
1/4	2.27	25.4	16.8	7.88	7.12	11.9	14.5
5/16	6.36	38.1	23.1	11.2	11.2	15.8	19.1
3/8	6.36	38.1	23.1	11.9	9.91	16.8	19.1
7/16	15	51.0	31.0	14.0	16.5	21.6	25.7
1/2	13	51.0	31.0	16.0	14.2	23.1	25.7
9/16	29	70.0	37.3	17.5	16.0	26.2	31.5
5/8	26	70.0	37.3	19.1	16.0	27.7	31.5
3/4	40	81.0	43.7	23.1	21.3	32.5	37.1
7/8	60	90.5	51.5	26.2	25.4	38.9	42.7
1	89	102	58.0	29.5	28.6	43.7	49.0
1-1/8	118	122	63.5	32.5	31.8	49.3	54.1
1-1/4	161	132	70.5	36.5	35.8	55.0	58.9
1-3/8	192	148	76.0	39.7	39.7	60.5	64.0
1-1/2	227	159	82.5	42.9	42.9	67.0	69.0
1-3/4	366	184	97.5	49.2	50.0	79.5	78.7
2	514	216	111	57.0	57.0	92.0	90.4
2-1/4	879	243	128	63.5	64.5	102	105
2-1/2	1068	267	140	70.0	71.5	114	114
2-3/4	1271	292	146	76.0	78.5	121	119
3	1335	305	152	82.5	86.0	127	126
3-1/4	1650	330	165	98	89.9	138	136
3-1/2	2106	356	178	98.5	100	148	147
3-3/4	2497	381	191	103	108	160	158
4	3087	406	206	111	114	173	170
4-1/2	4540	457	232	124	129	195	189
5	6600	508	267	140	143	222	210
6	12300	610	318	165	171	259	252